

THE NEW STYLE ELECTRIC

NLZ

ELECTRIC MICROMOTOR SYSTEM



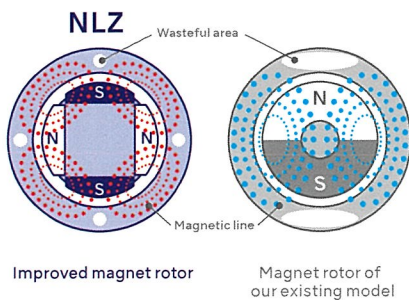
- Flexible Installation Style with Superior Visibility & Operability in a Compact Design
- Superior* Performance with Compact Size
- NSK Safety Functions, 'Contra-Check Function' & 'Contra-SAFE Function'
- Efficient Endodontic Treatment thanks to 'Reciprocating Function' and WAVEONE® GOLD files

Superior* Performance of Motor with Compact Size

*Compared to our existing model.

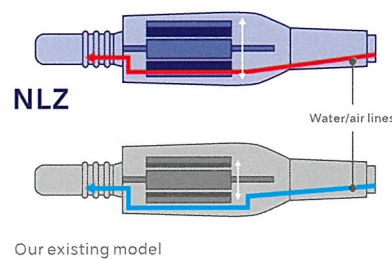
POWERFUL

The conventional magnet rotor has been replaced with an improved magnet rotor. More powerful rotation is achieved in the same amount of space by reducing weak magnetic areas.



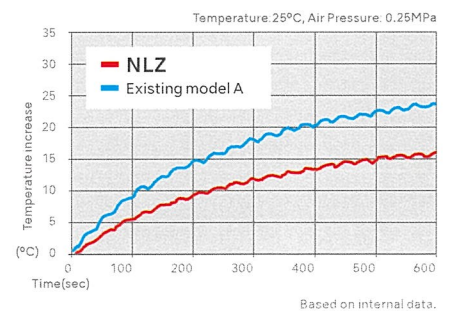
EFFICIENT

In this unique technology, the water and air lines that used to bypass the motor have now been integrated with the motor. This new, more efficient configuration makes maximum use of the limited space and is lighter and more powerful than before.

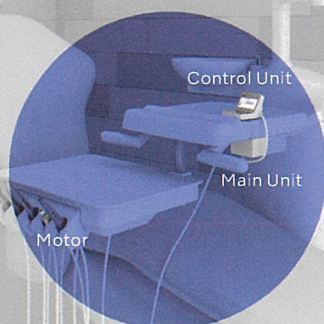


LESS HEAT

NLZ employs a simple non-layered coil instead of a standard layered coil. The coils are as compact as possible, shortening the pathway for heat generating current. As a result it generates less heat without reducing the output power.



A Totally New Installation Style only from NSK



Specs comparison

		Our existing model	NLZ · NLZ E
Motor Specs	Number of rotations	2,000 - 40,000 min ⁻¹	100 - 40,000 min ⁻¹
	Max Torque	3.4 Ncm	4.2 Ncm
Corresponding model to endodontic mode		—	○ (NLZ E)

120%
High Torque

For Safer and More Efficient Endodontic Treatment

*NLZ E only

NLZ E



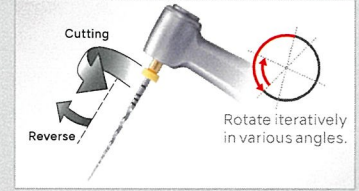
In addition to the Auto Reverse and Auto Stop functions, a wide range of new features are incorporated for safer and more efficient endodontic treatment.

Endodontic reciprocating function

WaveOne® Gold

Compatible with the Dentsply Sirona Endodontics reciprocating file: WAVEONE™ GOLD. WAVEONE®, from Dentsply Sirona, sets new standards in Endodontics, by bringing simplicity to the root canal shaping procedure, using only one NiTi instrument per root canal in most cases. The global shaping time is thus decreased by up to 40% versus a traditional continuous rotary technique. The new NLZ Endo motor has a reciprocating function which allows to work in the WAVEONE® reciprocating mode. A large rotating angle in the cutting direction provides high efficiency, whereas a smaller angle in the reverse direction allows the WAVEONE® file to safely progress along the canal path, whilst reducing the risk of a screwing effect and file breakage.

WaveOne® is registered trademark of Dentsply Sirona Endodontics.



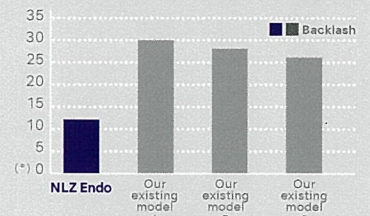
Reciprocating specialist electric attachment

NLZ Endo (option) 6:1 Reduction



Newly developed reciprocating specialist electric attachment NLZ Endo. Building on our existing handpiece development technology, we have succeeded in reducing the movement loss during reciprocating operations. As a result, it is possible to correctly transmit reciprocating actions for a smooth endodontic treatment.

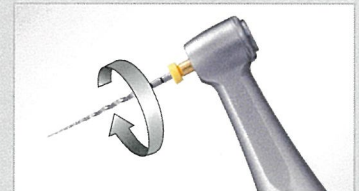
Product-by-product SPEC



Endo torque calibration function

Performing the "Contra-Check Function" shown in the left also enables torque calibration. This function measures the no-load current values and corrects the torque accordingly, resulting in greatly enhanced safety in endodontic treatment.

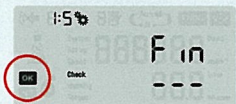
*This function cannot completely absorb the individual difference of the actual motor and contra-angle.



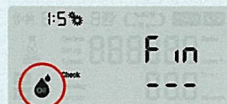
Safety Functions Contra-Check Function (Proprietary to NSK)

"Contra-Check Function" helps detect abnormalities caused by deterioration of the electric attachment and insufficient maintenance before use. Our advanced function is the result of NSK's relentless pursuit of safe treatment.

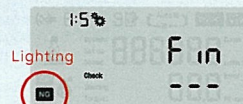
*NSK's Ti-Max Z, X and S-Max M electric attachments are compatible with "Contra-Check Function".



No error. Please continue to use as it is.



Maintenance (lubrication) required



Repair required

The motor is operable but its rotor will automatically slow down and stop if the "Contra-Restriction Function" is on.



Repair required

The motor becomes forcibly inoperable.

NLZ E



Contents:

- NLZ E U (Control Unit & Main Unit) ● NE180 (AC adaptor)
- NLZ (Motor) ● NLZ CD (Motor Cord) ● NLZ U BRACKET

Specifications:

Unit	
Dimension Control Unit	: W 76 × D 87.1 × H 63.4 mm
Dimension Main Unit	: W 146 × D 75 × H 48 mm
Power Supply	: 230 v 50/60 Hz
Programs	: General Application Mode / 6 programs Rotary Endo Mode / 6 programs
Motor	
Motor Type	: Brushless Micromotor
Max Torque	: 4.2 Ncm
Endodontics Torque	: 0.3 - 6.0 Ncm (Depending on gear ratio)
Motor Speed	: 100 - 40,000 min ⁻¹
Dimension	: ø22 × H 68.8 mm
Weight	: 59 g (motor only)
Light	: White LED

NLZ Endo NON OPTIC



- Gear Ratio 6 : 1 Reduction
- Max Speed : 1,000 min⁻¹ (Input Max Rotation Speed of the Motor : 6,000 min⁻¹)
- Engine Files (ø2.35) *For Rotary Endo mode
- Wave-One Reciprocating Files (ø2.35) *For Recipro Endo Mode
- Head Size : ø8.6 × H 11.3 mm
- Push Button Chuck